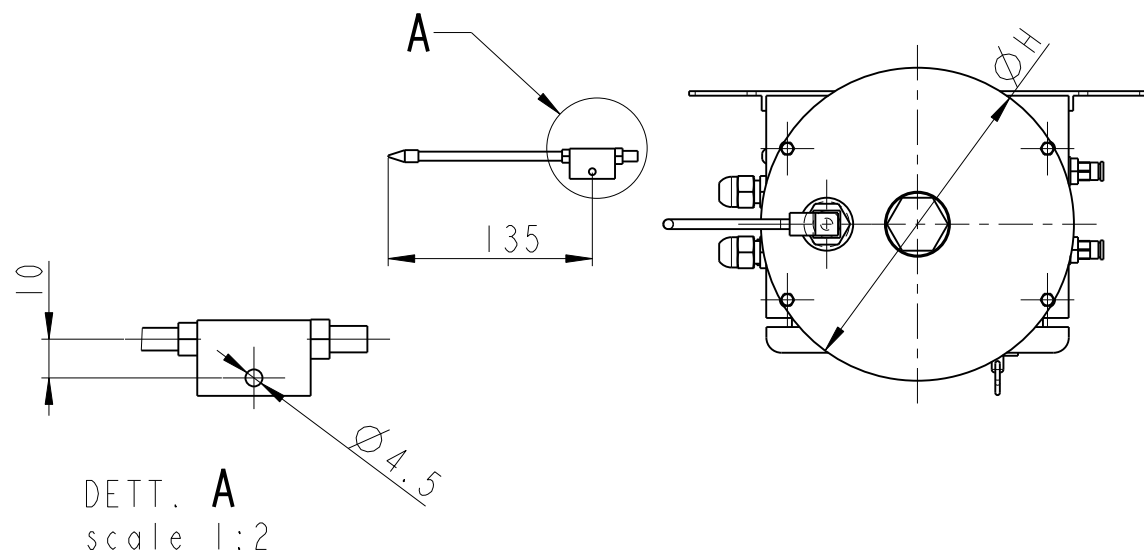


INSTALLARE TRAMITE VITI M8
INSTALL BY M8 SCREWS

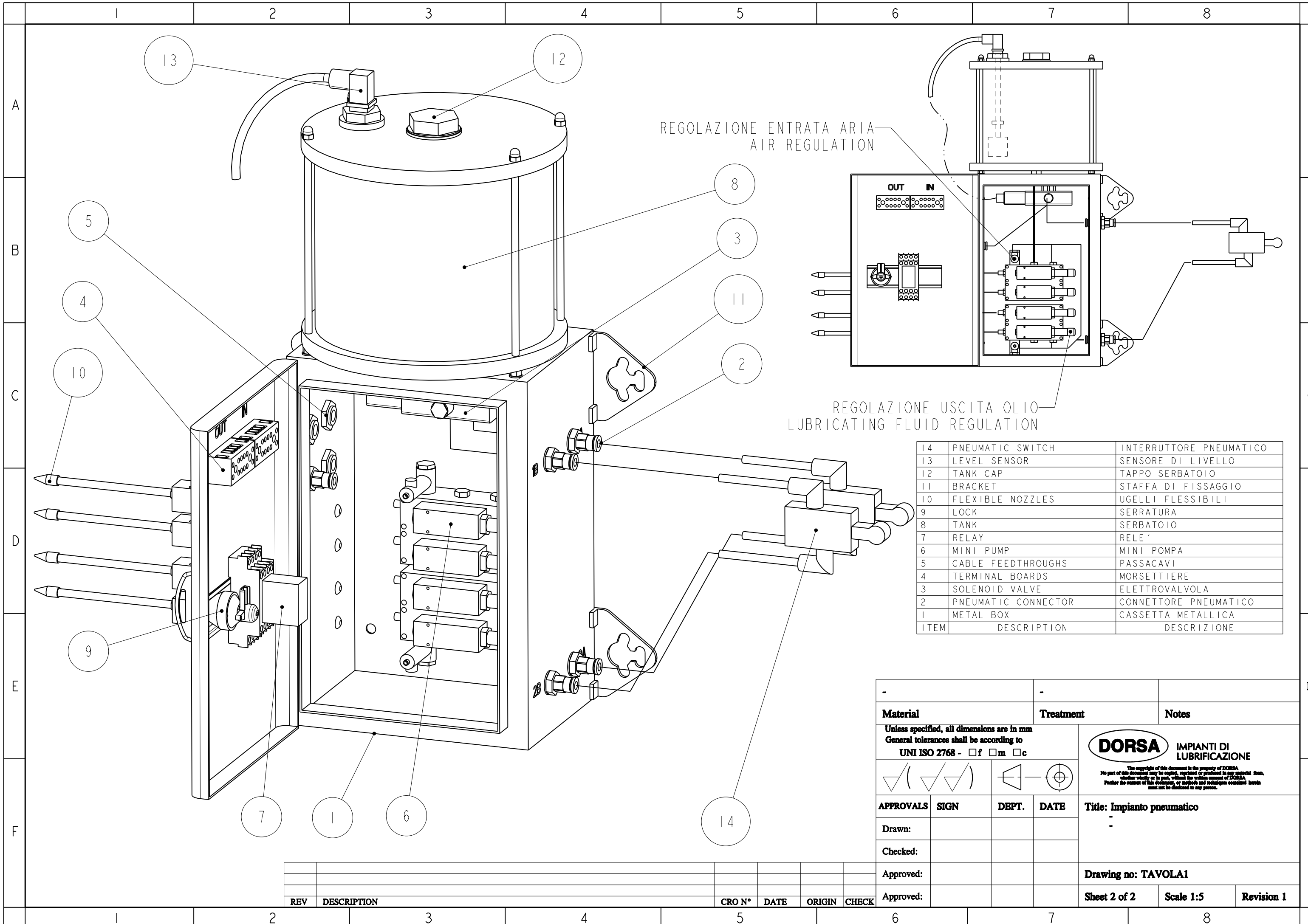


TUBETTO ALIMENTAZIONE UGELLI DI LUBRIFICAZIONE = TUBO Ø4x2.5
 FEEDING TUBE FOR LUBRICATING NOZZLE = Ø4x2.5
 POSIZIONARE IL BLOCCHETTO DI DISTRIBUZIONE DELL'UGELLO IN POSIZIONE ORIZZONTALE
 PLACE THE DISTRIBUTION BLOCK OF THE LUBRICATING NOZZLE IN HORIZONTAL POSITION
 POSIZIONARE LE TUBAZIONI DI ALIMENTAZIONE UGELLI AD UN LIVELLO INFERIORE AGLI STESSI
 KEEP THE LUBRICATING NOZZLE FEEDING TUBES BELOW NOZZLE POSITION

	300	400	150	620	342	325	270	207	3,5 L
PN 2+2	200	300	170	520	242	225	170	207	3,5 L
CODICE IMPIANTO SYSTEM CODE	A	B	C	D	E	F	G	H	VOLUME SERB. TANK VOLUME

Material	Treatment	Notes
Unless specified, all dimensions are in mm General tolerances shall be according to UNI ISO 2768 - <input type="checkbox"/> f <input type="checkbox"/> m <input type="checkbox"/> c		
		DORSA IMPIANTI DI LUBRIFICAZIONE <small>The copyright of this document is the property of DORSA. No part of this document may be copied, reprinted or produced in any material form, whether wholly or in part, without the written consent of DORSA. Further the content of this document, or methods and techniques contained herein must not be disclosed to any person.</small>
APPROVALS	SIGN	DEPT. DATE
Drawn:		
Checked:		
Approved:		
Approved:		
Title: Impianto pneumatico		
Drawing no: TAVOLA1		
Sheet 1 of 2	Scale 1:5	Revision 1

REV	DESCRIPTION	CRO N°	DATE	ORIGIN	CHECK



REGOLAZIONE ENTRATA ARIA
AIR REGULATION

REGOLAZIONE USCITA OLIO
LUBRICATING FLUID REGULATION

14	PNEUMATIC SWITCH	INTERRUTTORE PNEUMATICO
13	LEVEL SENSOR	SENSORE DI LIVELLO
12	TANK CAP	TAPPO SERBATOIO
11	BRACKET	STAFFA DI FISSAGGIO
10	FLEXIBLE NOZZLES	UGELLI FLESSIBILI
9	LOCK	SERRATURA
8	TANK	SERBATOIO
7	RELAY	RELE'
6	MINI PUMP	MINI POMPA
5	CABLE FEEDTHROUGHS	PASSACAVI
4	TERMINAL BOARDS	MORSETTIERE
3	SOLENOID VALVE	ELETTROVALVOLA
2	PNEUMATIC CONNECTOR	CONNETTORE PNEUMATICO
1	METAL BOX	CASSETTA METALLICA
ITEM	DESCRIPTION	DESCRIZIONE

Material		Treatment		Notes
Unless specified, all dimensions are in mm General tolerances shall be according to UNI ISO 2768 - <input type="checkbox"/> f <input type="checkbox"/> m <input type="checkbox"/> c				
				<p>DORSA IMPIANTI DI LUBRIFICAZIONE</p> <p><small>The copyright of this document is the property of DORSA. No part of this document may be copied, reprinted or produced in any material form, whether wholly or in part, without the written consent of DORSA. Further the content of this document, or methods and techniques contained herein must not be disclosed to any person.</small></p>
APPROVALS	SIGN	DEPT.	DATE	
Drawn:				
Checked:				
Approved:				Title: Impianto pneumatico
Approved:				Drawing no: TAVOLA1
Approved:				Sheet 2 of 2 Scale 1:5 Revision 1

REV	DESCRIPTION	CRO N°	DATE	ORIGIN	CHECK